

# LLM

The Sunnex LLM series is a precision-engineered leveling machine mount, specifically designed to provide stable support for lighter equipment, including woodworking machinery, compressors, smaller industrial machines, as well as office and household appliances.

Each mount in the LLM series features a leveling bolt with various types of vulcanized rubber feet, ensuring a secure and reliable installation on most standard surfaces.

The machine feet can be mounted in both threaded and through holes in the frame or chassis, offering flexibility in installation.

## Features

- Loads up to 75kg per machine mount
- Galvanized or stainless steel
- Damping element of high resistant rubber

## Applications

- Light engineering machinery
- Compressors
- Office- and home appliances

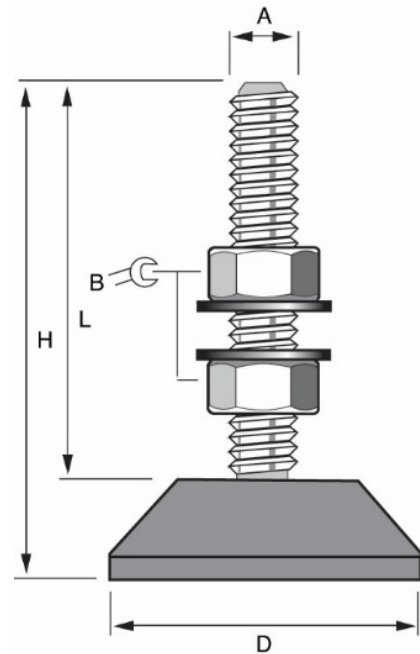
## Benefits

- Anti-vibration and levelling
- Sound reducing
- Reduces risk of “wandering” machines



## Technical specification LLM

Rubber:	Nitrile rubber
Finish:	Stainless or zinc-plated steel
Load capacity:	30-75kg
Diameter, D:	30-46mm
Height, H:	38-75mm
Length, L:	28-60mm
Key grip, B:	13-17mm
Bolt size, A:	M6-M10



Model	Max load per machine mount daN (kg)	D mm	A mm	B mm	H mm	L mm	Art.nr
LLM 108	60	30	M8	13	65	57	10410
LLM 213*	60	32	M10	-	45	38	10414
LLM 259*	30	30	M6	-	38	28	10413

Model	Max load per mount daN(kg)	D mm	A mm	B mm	H mm	L mm	Stainless/ Zinc	Color	Art.nr
LLM 19	40	46	M10	17	50	34	ZP	Grey	10405
							SS	Grey	10406
					75	60	ZP	Grey	10409
							SS	Grey	10404
	75	46	M10	17	50	34	ZP	Black	10400
							SS	Black	10401
					75	60	ZP	Black	10407
							SS	Black	10408

\*Delivered without nut and washer