

SUNNEX LLM

Sunnex LLM is a levelling machine mount. This mount is specially designed for stable levelling of lighter equipment such as woodworking machinery, compressors, smaller industrial machines, office- and home appliances.

All machine mounts in the LLM series consists of a levelling bolt with different types of vulcanized rubber feet, which guarantees a reliable installation on most common surfaces when normal operation conditions prevail.

Sunnex LLM can be mounted both in internal and external bolt holes in the chassis.

Characteristics:

- Loads up to 75 kg per machine mount
- Galvanized or stainless steel
- Damping element of high resistant rubber

Applications:

- Light engineering machinery
- Compressors
- Office- and home appliances

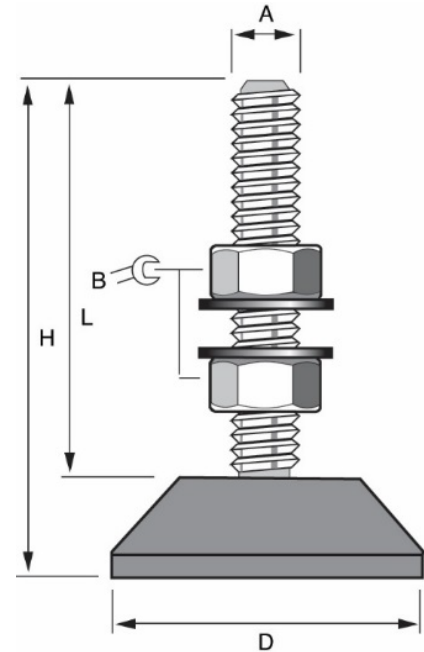
Advantages:

- Anti-vibration and levelling
- Sound reducing
- Reduces risk of "wandering" machines



Technical specification LLM

Rubber:	Nitrile rubber
Finish:	Stainless or galvanized steel
Load capacity:	30-75 kg
Diameter, D:	30-46 mm
Height, H:	38-75 mm
Length, L:	28-60 mm
Key grip, B:	13, 17 mm
Bolt size, A:	M6-M10



Model	Max load per machine mount daN (kg)	D mm	A mm	B mm	H mm	L mm	Art.nr
LLM 108	60	46	M8	13	65	57	10410
LLM 213*	60	30	M10	-	45	38	10414
LLM 259*	30	30	M6	-	38	28	10413

Model	Max load per mount daN(kg)	D mm	A mm	B mm	H mm	L mm	Stainless / Galv.	Color	Art.nr
LLM 19	40	46	M10	17	53	38	Galv.	Grey	10405
							SS	Grey	10406
					75	60	Galv.	Grey	10409
							SS	Grey	10404
	75	46	M10	17	53	38	Galv.	Black	10400
							SS	Black	10401
					75	60	Galv.	Black	10407
							SS	Black	10408

*Delivered without nut and washer