

SUNNEX LUXOR

Sunnex Luxor is a LED-lamp with exceptional intensity for machine applications, where the lamp head is placed at a distance from the lit surface.

The lamp head is made from durable aluminium for challenging environments. The classic Sunnex flexible arm and Spot-version can be chosen or the articulated arm system, for superior reach.

The wattage is 12W and suitable distance between lamp head and surface is 75-200cm, with narrow beam (8°) the distance can be increased to 350cm. Supply voltage is 24VDC for safe use in, e.g. industrial environment, adaptor for connection to the power net is available as an accessory. IP20 and IP65 versions are available as standard.

Suitable applications are larger machines, CNC-Centres and other applications where very high intensity is needed.

If spot or flexible arm is chosen our accessories like C-clamp, wall bracket, magnetic base and table base can be used with this product. 230V adaptor is also an accessory.

Custom versions available upon request.

Features include

- Flexible arm, articulated arm system AAS or Spot-version
- Long technical life > 50.000h
- 24VDC supply voltage for safe use in harsh environments
- High intensity for use at greater distance
- Adaptor available for direct connection to mains voltage
- Other applications where high intensity is required

Applications

- Machines
- CNC-Centres
- Large presses

Benefits

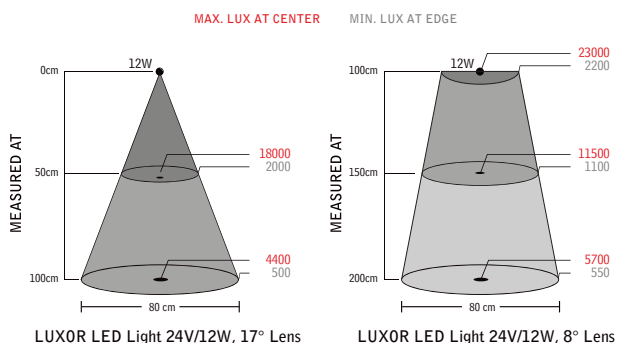
- Low power consumption
- Very low heat emission
- Very high intensity & luminous output
- Flexible arm for precise adjustment
- Articulated arm system for superior reach





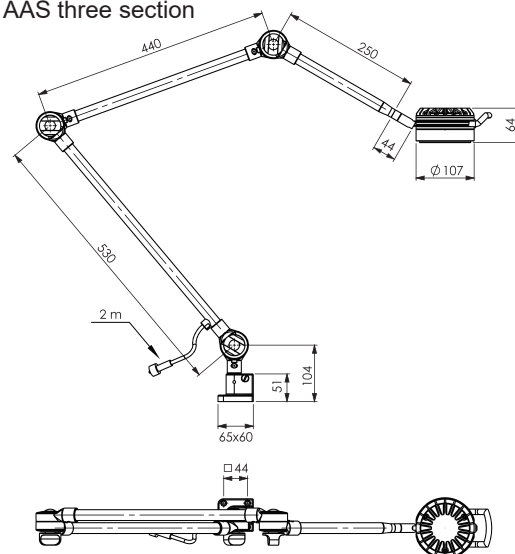
Technical specifications

Supply voltage	24-36VDC 2m cord set (100-240VAC Plugin AC/DC-Adaptor available as an accessory, IP44)
Power consumption	12W
Arm length	500 mm flex, 1000 or 1250 mm rigid arm
Colour	Black
Colour temperature	4300K
IP rating	IP20/IP65
Protection class	III
Light output	900Lm, 4400 Lx 17° std, 23000 Lx with optional 8° at 100cm distance
Colour rendering index	CRI: 95
Life span	> 50.000h

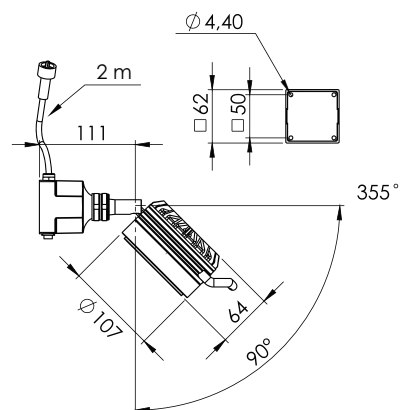


Model	Arm	Connection	Other	Part.No.
Luxor	500 mm flex	24-36V AC/DC	IP65	36100
	500 mm flex		Joint/IP20	36100
	Spot		IP20	36160
	AAS two section		IP65	36155
	AAS three section		IP65	36153

AAS three section



Spot



PSU (100-240V~)



Plug-in Adaptor for Europe 230V
33901

Mounting Accessories



Magnetic base
14000



Table base
14015



C-Clamp
14020



Wall mount
14030

More info about
Accessories
see separate leaflet
www.sunnex.se